

Product Model No. : LK P150S BC
Product Description : LED Soft Panel Bi Color 150W

LED SOFT PANEL 150W

High quality LED Soft panel light with wide beam spread of 120 Degree provided with high purity parameters like CRI, TLCI & R9 Values above 96, Studio quality dimming from 100% ~ 0% along with Manual, DmX and Standalone modes of operation. Light is ideal to be used for Tv Studios Chroma and Anchor lighting application, Photography use, Film, Fiction requirement and multipurpose requirements.



Accessories: Barndoor, Diffuser, POS Yoke, Safety Chain, C Clamp

Technical Specifications:

Electrical & Power:

- Power Consumption 160W
- Input Voltage AC 100V ~ 240V, 50Hz

Optical Arrangement:

- Beam Angle 120° Spread
- PMMA Milk White Diffuser

Lamp Source:

- LED SMD Lamp Source
- CCT 3200K ~ 5600K Variable
- 400 x 0.5W Surface Mounted LED's
- Colour Rendering Index 98+
- Tel. Lighting Consistency Index 99+
- R9 Value 95+
- 50,000 Hours Burning life

Physical & Construction:

- Dimension 450 x 400 x 140mm
- Weight 9.4 Kgs/ 20.72 lbs
- DmX 5 Pin In and Out
- Power Loop In and Out
- Ingress Protection IP20
- Aluminium Body with Black Powder coated finish
- LCD Easy View Display
- Inbuilt Barndoor arrangement

Control:

- DmX 512 Through 5 Pin XLR
- Manual Mode Operation
- 2 Channel DmX Control
- Master Slave mode through keys / pot



Others:

- Working Temperature +45° ~ -25°
- Passive Cooling System, No Fan
- Compatible for High Speed Photography 10K FPS
- Flicker Free & Green tone free

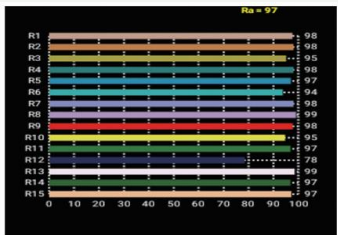
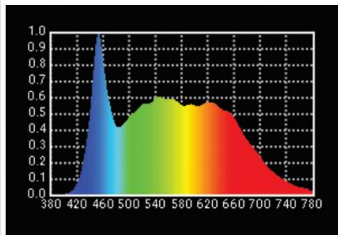
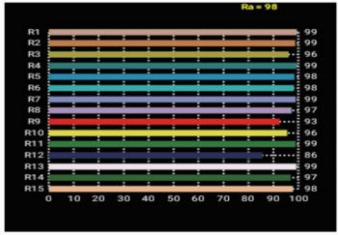
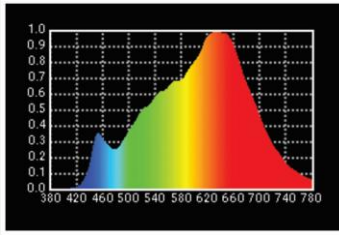


Gel frame Barndoor



Tv Studio Lighting

150W LED SOFT PANEL – Bi Color



3200K

5600K

Features

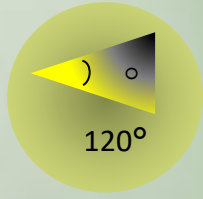
Lamp Source



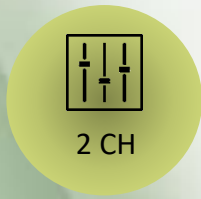
CC Temp.



Beam Angle



DMX Channels



Power



Control



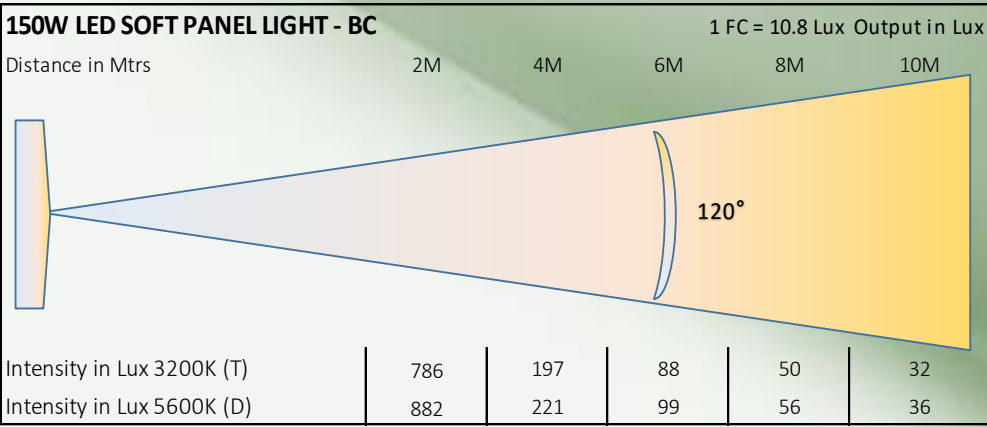
Power / DMX



CRI Value



Photometry Readings



- Available Models:**
- LK P150S T (Tungsten)
 - LK P150S D (Daylight)
 - LK P150S BC (Bi Color)

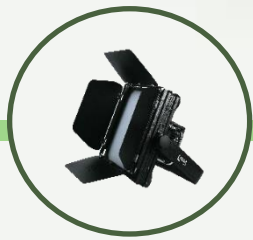
Fixture Images



View-1



View-2



View-3



View-4